



# DATA SHEET

## Hall Effect Current Sensor

PN: CHB\_LTA5S2H

IPN=50~300A

### Feature

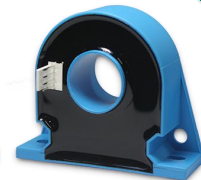
- Closed- loop (compensated) current transducer
- Capable measurement of currents: DC, AC,pulse with galvanic isolation between primary circuit and secondary circuit.
- Supply voltage: DC +5.0V

### Advantages

- High accuracy
- Low temperature drift
- Optimized response time, no insertion losses
- Low power consumption
- Very good linearity
- Can be customized

### Applications

- The application of variable frequency electrical appliances
- AC/DC variable-speed drive
- Uninterruptible Power Supplies (UPS)
- Switched Mode Power Supplies (SMPS)
- Inverter applications



Electrical data: (Ta=25°C, Vc=+5.0VDC,RL=2KΩ,CL=10000pF)

Parameter \ Ref	CHB50 LTA5S2H	CHB100 LTA5S2H	CHB200 LTA5S2H	CHB300 LTA5S2H
Rated input Ipn(A)	50	100	200	300
Measuring range Ip(A)	0 ~ ±50	0 ~ ±100	0 ~ ±200	0 ~ ±300
Turns ratio Np/NS (T)	1:2000	1:4000	1:4000	1:5000
Inside resistance RM(Ω)	20±0.1%	20±0.1%	10±0.1%	8.333±0.1%
Output voltage Vo(V)	2.500±2.0*(IP/IPN)			
Output voltage Vo(V)	@IP=0,T=25°C		2.500	
Reference voltage VR(V)	@Internal reference,re out		2.500	
Supply voltage VC(V)	+5.0±5%			
Accuracy XG(%)	@IPN,T=25°C		< ±0.5	
Offset voltage VOE(mV)	@IP=0,T=25°C		< ±10	
Temperature variation of VOE VOT(mV/°C)	@IP=0,-40 ~ +85°C		< ±0.05	
Linearity error εr(%FS)	< 0.1			
Di/dt accurately followed (A/μs)	> 50			



Cheemi Technology Co., Ltd

Tel: 025-85996365

E-mail: info@cheemi-tech.com

www.cheemi-tech.com

Add:N22, Xianlongwan, Xianyin South Road, Qixia District, Nanjing - China.

# Cheemi Technology Co., Ltd

Response time $t_{ra}(\mu s)$	@90% of IPN	< 1.0
Power consumption IC(mA)		10+Is
Bandwidth BW(KHZ)	@-3dB,IPN	DC-100
Insulation voltage Vd(KV)	@50/60Hz, 1min,AC	3.0

## General data:

Parameter	Value
Operating temperature TA(°C)	-40 ~ +125
Storage temperature TS(°C)	-55~ +150
Mass M(g)	50
Plastic material	PBT G30/G15, UL94- V0;
Standards	IEC60950-1:2001
	EN50178:1998
	SJ20790-2000

## Dimensions(mm):

	<p>Connection</p>
	<p>General tolerance</p> <p>General tolerance: &lt;math&gt;\pm 0.5\text{mm}&lt;/math&gt;            Primary through-hole: <math>D_{20} \pm 0.3\text{mm}</math> ;            Connection of Secondary :            2510-04A (Instead of Molex 5045-04A)</p>

## Remarks:

- When the current goes through the primary pin of a sensor, the voltage will be measured at the output end.
- Custom design is available for the different rated input current and the output voltage.
- The dynamic performance is the best when the primary hole if fully filled with.
- The primary conductor should be <math>< 100^{\circ}\text{C}</math>.

**WARNING : Incorrect wiring may cause damage to the sensor.**



**Cheemi Technology Co., Ltd**  
 Tel: 025-85996365 E-mail: [info@cheemi-tech.com](mailto:info@cheemi-tech.com) [www.cheemi-tech.com](http://www.cheemi-tech.com)  
 Add: N22, Xianlongwan, Xianyin South Road, Qixia District, Nanjing - China.